

INSTRUCTIONAL BUILDING
SISSETON WAHPETON COLLEGE
AGENCY VILLAGE, SD
PROJECT NO. 2023-0029

HKG ARCHITECTS, INC.

ADDENDUM DATE: April 10, 2025

Original Plans and Specifications Dated: March 7, 2025

BID DATE: Tuesday, April 15, 2025, 1:00 P.M. C.T.

SCOPE OF THIS ADDENDUM:

The following becomes a part of the original Drawings and Project Manual, taking precedence over the items that may conflict.

The bidder shall note receipt and make acknowledgement of the addendum on his bid form, incorporating its provision in his bid.

Addendum issued to all Prime Contract Bidders and to all others to whom Drawings and Project Manuals have been issued by the Architect.

ADDENDUM-2

DRAWINGS

ITEM NO. 1 - SHEET A101: TITLE SHEET

- a. Alternate Schedule: Alt. #2 – Add attached Alt. #2 Brick Elevations (1 page).
Base Bid Window Type A and Type C change to Type A Alt #2.

ITEM NO. 2 - SHEET A104: FLOOR PLANS, INTERIOR ELEVATIONS

- a. Alternate #1 Canopy Section: Cedar Timber Trusses, do not want to see lateral bracing in the bottom chord. Alaskan Yellow Cedar Glulam with exterior finish.
- b. 11 / Level 1 Plan:
Class 107 South Wall - White Boards to be 8'-0" tall x 24'-3" wide.
Class 110 North Wall – White Boards to be 8'-0" tall x 25'-7 ½" wide.
Class 112 North Wall – White Boards to be 8'-0" tall x 15'-10 ½" and 8'-4" wide.

SPECIFICATIONS

ITEM NO. 3 – BID MODIFICATION FORM:

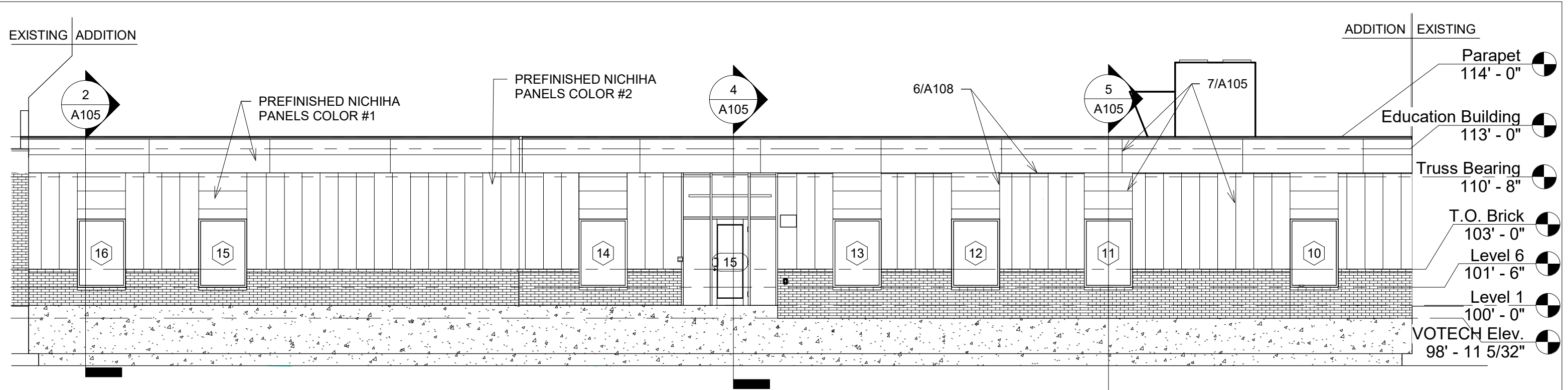
- a. Send Bid Modification Form to: andy@hkgarchitects.com, Copy caitlin@hkgarchitects.com and eholmes@swcollege.edu

ITEM NO. 4 – SECTION 10 11 16 MARKERBOARDS:

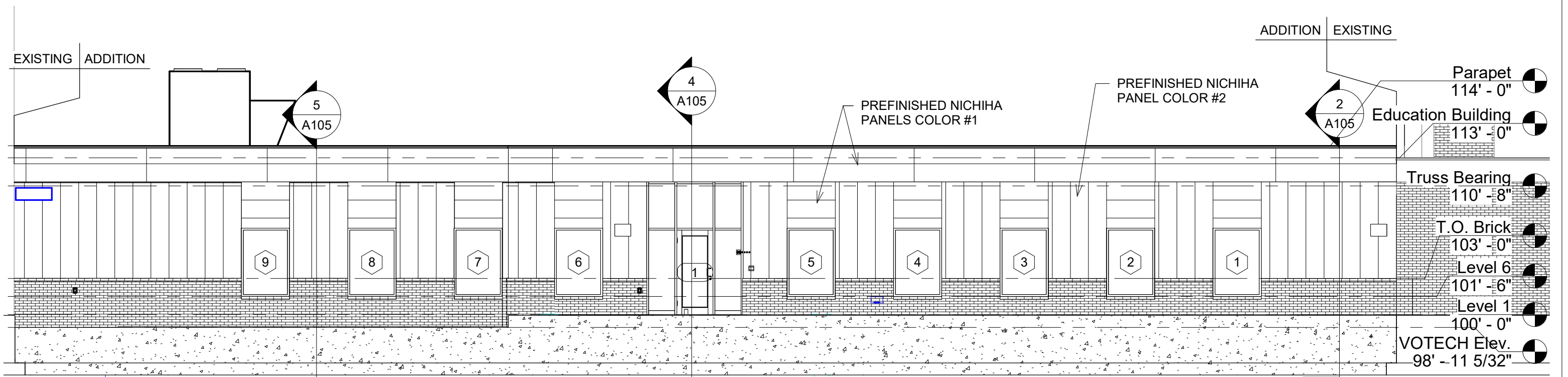
- a. Add Section 10 11 16 Markerboards in it's entirety (3 pages).

SEE ATTACHED WPE ADD 2 (1 PAGE)

END OF ADDENDUM-2



1 Brick Alt. #2 East
1/8" = 1'-0"



2 Brick Alt. #2 West
1/8" = 1'-0"



REVISED DATE	Plans for Instructional Building Sisseton Wahpeton College Agency Village, South Dakota	Alt. #2 Brick Elevations	DRAWN BY CH.	1
CERT. NO.			TRACED BY	
	HKG Architects, Inc.	Aberdeen, S.D.	CHECKED BY DM.	OF-1
			DATE	PROJECT NO.
			4/10/25	2023-0029

SECTION 10 11 16 - MARKERBOARDS

PART 1 GENERAL

1.1.1 RELATED DOCUMENTS

- A. Drawings and general provisions of the Contract, including General and Supplementary Conditions and Division 1 Specification Sections, apply to this Section.

1.2 SUMMARY

- A. This Section includes the following:

- 1. Whiteboard Wall Panels.

1.3 SUBMITTALS

- A. Shop Drawings: For each type of visual display board required.
 - 1. Include dimensioned elevations. Show location of joints between individual panels where unit dimensions exceed maximum panel length.
 - 2. Show anchors, grounds, reinforcement, accessories, layout, and installation details.
- B. Samples for Initial Selection: Manufacturer's color charts showing the full range of colors and textures available for the following
 - 1. Markerboards: Actual sections of finish for each type of markerboard required.

1.4 QUALITY ASSURANCE

- A. Source Limitations: Obtain visual display boards through one source from a single manufacturer.
- B. Product Options: Drawings indicate size, profiles, and dimensional requirements of visual display boards and are based on the products indicated. Other manufacturers' products with equal performance characteristics may be considered.
- C. Do not modify intended aesthetic effects, as judged solely by Architect, except with Architect's approval and only to the extent needed to comply with performance requirements. Where modifications are proposed, submit comprehensive explanatory data to Architect for review.

PART 2 PRODUCTS

2.01 MARKERBOARDS

- A. Available Manufacturers: Subject to compliance with requirements, manufacturers offering products that may be incorporated into the Work include, but are not limited to, the following:

- 1. Magnatag Visible Systems.

- a. Contact: 2031 O'Neill Rd., Macedon, NY 14502; Telephone: 800-624-4154; Fax: 315-986-4000; Email: sales@magnatag.com; Website: www.magnatag.com.

- B. WhiteWalls: Dry-erase, magnetic-steel, removable, frameless whiteboard wall paneling, for full or partial wall surfacing, with mounting rails and accessories.

- 1. Description:

- a. Wall Panel Layout: [As shown on drawings]

- 1) Materials:

- a) Writing Surface and Edges: Tension-leveled, 22 gauge (0.0299 inches or 0.72 mm) magnetic steel with MagnaLux proprietary white dry-erase finish; fabricated and formed into frameless, self-edged, magnetic whiteboard with fully-rounded corners.
- b) The honeycomb core material is made of commercial grade honeycomb kraft paper consisting of 80 percent recycled material.
- c) Core: $\frac{1}{2}$ inch (12.7 mm) cellular fiber.
- d) Weight: 1.35 lb./ft.².
- e) Back: Textured aluminum sheet is 24 gauge (0.0239 inches or 0.607mm).
- f) The aluminum alloy backer specification as defined by ASTM standard B209 is H3105-H234.

- b. Fire Resistance: Class A; Flame Spread 5 or less, Smoke Developed 25 or less; in accordance with ASTM E84.

2. Installation: Built-in Back-Channel receiver across back of panel fits on wall mounted micro adjustment hanging bracket to mechanically attach panel tight to wall. Each hanging bracket shall include leveling screw. Multi-panel installations shall include seam anchor brackets along the bottom corner of the panel to keep panel seams tight to wall. Panels are removable.

3. Panel:

a. Style: [Plain white] [1 inch (25.4 mm)]

c. Size:

1) 96 inch

2) Custom Width: [As shown on drawings]

3) Standard Length: [48 inch (1219 mm)] [60 inch (1524 mm)] [66 inch (1676)] [70 inch (1778)] [72 inch (1829 mm)] [78 inch (1981)] [84 inch (2134 mm)] [90 inch (2286 mm)] [94 inch (2388 mm)] [96 inch (2438 mm)] [98 inch (2489)] [102 inch (2591 mm)] [108 inch (2743mm)] [114 inch (2896 mm)] [118 inch (2997 mm)].

(2997 mm) in $\frac{1}{2}$ inch increments.

5) Custom Length: [As shown on drawings]

4. Micro Adjusting Mounting Brackets: Brackets is made of anodized aluminum and is suitable for wall construction. Brackets include leveling screw.

a. Width: 0.50 inches

b. Length: 1.5 inches

c. Height: 1.75 inches

2.02 ACCESSORIES

A. Board Cleaner: 3

B. Dry-Erase Supplies:3

C. Card Holders and Inserts:3

D. Magnets: 3

E. Document Display: 3

PART 3 EXECUTION

3.01 EXAMINATION

A. Verify that conditions of work previously installed under other sections or contracts are acceptable for product installation in accordance with manufacturer's written instructions prior to installation of markerboards.

1. Notify [Architect] of unacceptable conditions upon discovery.

2. Proceed with installation only after unacceptable conditions have been corrected. =

3.02 PREPARATION

A. Prepare work to receive markerboards in accordance with manufacturer's written instructions and approved submittals.

3.03 INSTALLATION

A. Install markerboards in accordance with manufacturer's written instructions and approved submittals.

3.04 CLEANING

A. Perform daily progress cleaning.

B. Upon completion, remove surplus materials, rubbish, tools and equipment.

C. Collect recyclable waste and dispose of at appropriate recycling facilities.

PART 3, Preparation. Include only statements unique to this Section.

3.05 PROTECTION

A. Protect installed product from damage during construction in accordance with manufacturer's written instructions.

B. Repair or replace adjacent materials damaged by installation of markerboards.

3.06 MAINTENANCE

A. Maintain markerboards in accordance with manufacturer's written instructions.

END OF SECTION

Date: April 10, 2025

Project: Instructional Building
Sisseton Wahpeton College

To: Andy Schaunaman

Project #: BS24055

From: Stuart Oster, P.E.
Jon Kennedy, P.E.

Project Location: Agency Village, SD

Addendum Number: No. 2

To: All prime contract bidders and all others to whom Drawings and Specifications have been issued by the Engineer. Acknowledge receipt of the Addendum by inserting its number and date on the Bid Form. Failure to do so may subject bidder to disqualification. This Addendum forms a part of the Contract Documents. It modifies them as follows:

Drawings

Reference Drawing E105 Lighting Floor Plan

1. Light Fixture Schedule: fixture type D shall be HE Williams model WMPH, 3,000 lumen, 27 watt, 70CRI, 4000K, Type forward throw, dark bronze, micro-prismatic tempered glass lens, with 10-watt emergency low-temperature battery, and button-type photocell, or equal.
2. Lighting Plan: Restroom 117 the two ceiling type fixtures shall be a type CE (shaded fixture) and type C (non-shaded fixture), similar to Restroom 118.

END OF DOCUMENT – SO